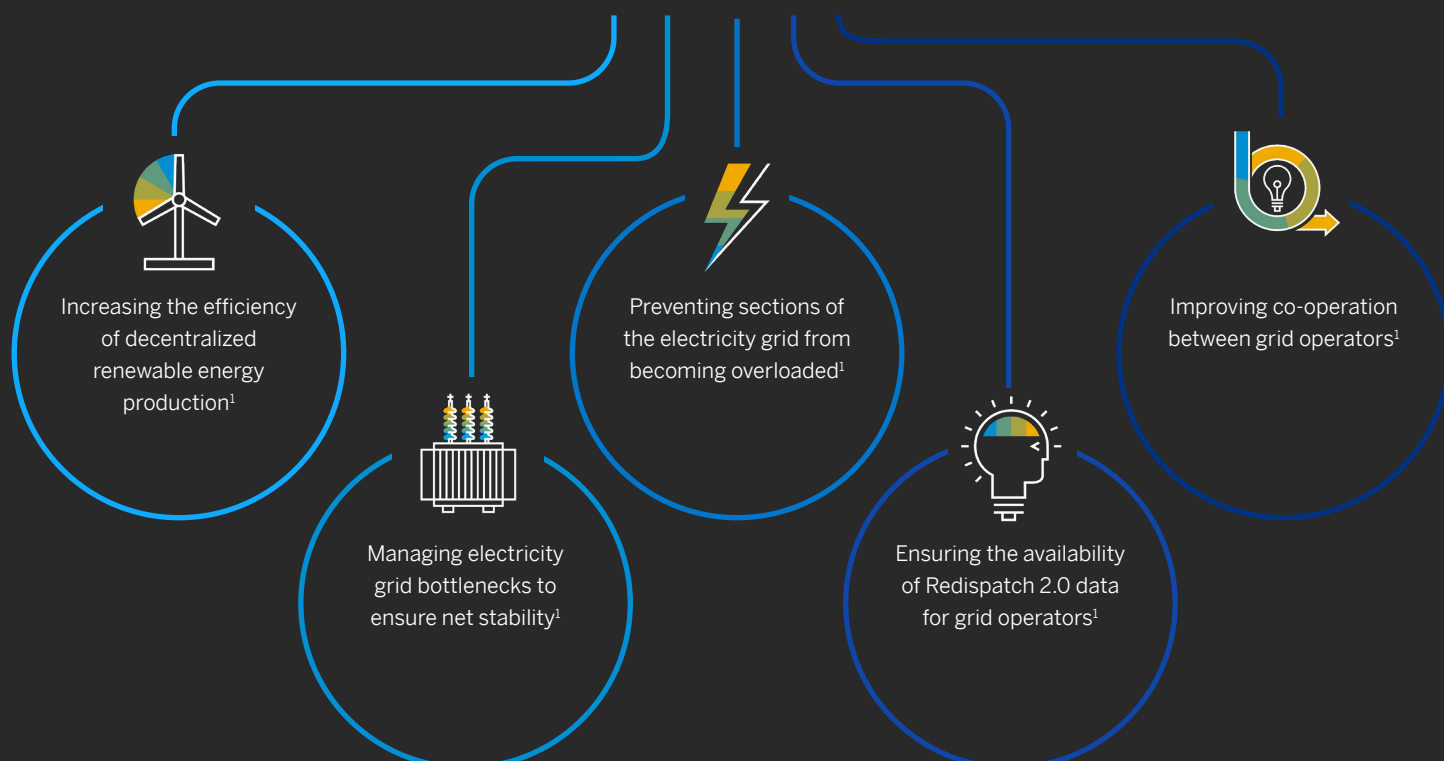


# Supporting the Energy Transition on the Way to Zero Emissions

Access, analyse, navigate, and process aggregated data on multiple levels with **Redis 2.0 Cockpit for SAP S/4HANA** certified as part of the SAP Industry Cloud Portfolio

[Learn more](#)

## CHALLENGES



## SOLUTION

Support network operators in settlement and billing of **Redispatch 2.0 relevant data, handling large amounts of renewable installations via the Redis 2.0 Cockpit**



Outstanding user experience through modern graphical user interfaces



Offers flexible integration, smart analysis, and modern monitoring



Includes cloud-based SAP Fiori apps for analyses and process monitoring

## BENEFITS

Enjoy fast navigation and analysis of data **through multiple levels**



Quicker provision and distribution of aggregated, relevant data within the business



Regulatory compliant with no duplication of master data

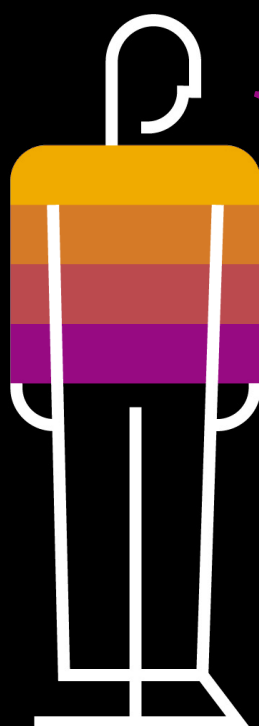


Integration to SAP Cloud for Energy and SAP S/4HANA for Utilities



Certified solution, that works with SAP solutions for sustainability to support the transition to Zero emission

## EVIDENCE



“ PROLOGA Energy was able to help us meet the challenges of Redispatch 2.0 with its innovative “Redis 2.0 Cockpit”, as well as its competent consulting services. ”

**Matthias Frank**, Energie und Wasser Potsdam GmbH

## Learn more

Discover more about the Industry Cloud solution **Redis 2.0 Cockpit for SAP S/4HANA** as part of **SAP's portfolio of sustainability solutions**



[Learn more](#)

Sources:  
1. Relevant for over 100,000 installations in Germany with a total installed load of approx. 10 GW